



Meals on Wheels of
Shawnee and Jefferson Counties, Inc.

2701 SW East Circle Drive South, Suite 2

Topeka, Kansas 66606

(785) 295-3980

www.mowks.org

ANNUAL REPORT

January 21, 2015



A Message from the President & CEO

Dear Friends of Meals on Wheels,

Thank you for the your support of our organization. Please recognize that you positively impact many lives. Over, 1,200 unduplicated clients received meals and a safety because Meals on Wheels has the privilege of providing this invaluable community service.

Survey results show that 90% of our clients report that because of Meals on Wheels, their health has remained the same or improved. This speaks to the impact the program has when serving a vulnerable senior population. Over 240,000 meals were provided to clients in 2014. To that end, please know that your contribution of time and resources have made this possible.

For several years, Meals on Wheels has been experiencing reductions in funding. To address this issue, special attention is paid to finding greater efficiencies in operations. During 2014, work was completed to streamline deliveries to dining centers and to volunteer pick-up locations. This not only improved meal quality related to better temperatures but also saved nearly 40 staff hours. Meals on Wheels strives to be good stewards of the resources bestowed to the agency.

The outlook for 2015 is shaping up to be challenging but exciting. The Meals on Wheels Board of Directors and Staff will work to identify the future direction of the agency with consideration to funding opportunities and efficient operations when carrying out the mission. Meals on Wheels will establish a long-term, stable funding environment that allows the organization to perpetually nourish elderly and homebound people in our community.

Our services and expertise are in high demand, and thanks to strong supporters, we have the capacity to respond. I invite you to read our annual report for additional information on our organization.

With all Sincerity,

A handwritten signature in cursive script, reading "Heidi Pickrell". The signature is written in dark ink and is positioned below the text "With all Sincerity,".

2014 Home-Delivery Meal Program Highlights

The Meals on Wheels Home-Delivery Program is for individuals that are homebound and are in need of a nutritious meal.

Meal delivery service coincides with a daily safety check to vulnerable clients.



Shawnee County-9% increase in 2014

144,015 meals were delivered to individuals in:
Auburn, Rossville, Silver Lake and Topeka

Jefferson County-18% increase in 2014

16,235 meals were delivered to individuals in:
Grantville, McLouth, Meriden, Nortonville, Oskaloosa, Ozawkie, Perry, Valley Falls, Williamstown and Winchester

KANSAS

THE SENIOR HUNGER CRISIS IS REAL

62,222
seniors in Kansas are
STRUGGLING WITH HUNGER.

36,426
of them / **26%** / are
RECEIVING OUR HELP...

LEAVING →

25,796
IN NEED

KANSAS OAA PROFILE / 2011

State Profile

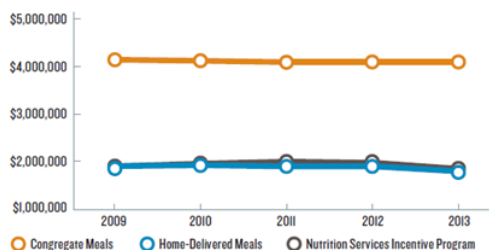
Older Americans Act Nutrition Expenditures	\$4,710,083
Total Nutrition Expenditures	\$18,288,084
Seniors Served by Meals on Wheels Programs	36,426
Home-Delivered	11,600
Congregate	24,826
Meals Served by Meals on Wheels Programs	3,216,182
Home-Delivered	1,725,201
Congregate	1,490,981

Title III Clients Receiving OAA Nutrition or Other Supportive Services

Live in poverty	21.3%
Belong to a minority group	7.5%
Live in rural communities	66.3%

Federal Appropriations

Funding for OAA programs is provided through the Department of Labor, Health and Human Services, Education, and Related Agencies (Labor-HHS-Education) annual appropriations bill, and dollars are allocated to states based on a formula. Since FY 2009, federal OAA Appropriations to Kansas's nutrition programs have fallen by **2.8%**.



Information data sources available at www.mowaa.org/factsheets.

2014 Dining Center Program Highlights

The Meals on Wheels Dining Centers are sites where individuals can socialize and receive nutrition education as well as a healthy meal for a confidential donation.

Eligible individuals are 60 years of age or older and can include their spouses and disabled individuals living and attending the dining center with them.



Shawnee County

73,772 meals were provided to individuals

Jefferson County

6,845 meals were provided to individuals

Dining Center Locations

Topeka

East Topeka Senior Center
First Apartments
Highland Park Methodist Church
LULAC Multipurpose Senior Center
Papan's Landing Senior Center
Santa Fe Apartments
Tyler Tower Apartments

Shawnee County

Auburn United Methodist Church
Rossville Senior Center
Silver Lake Senior Complex

Jefferson County

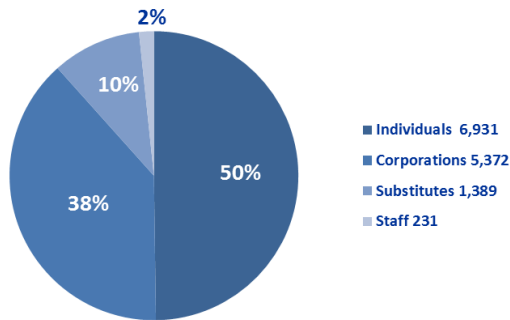
JCM Hospital-Winchester
St. Aloysius Catholic Church-Meriden

National Survey of Older Americans Act Participants illustrates that Congregate Nutrition Programs are effectively targeting services, as evidenced by:

- More than half of the congregate participants are 75 years and older,
- 58% of the congregate participants indicated that the congregate meal provides one-half or more of their total food for the day,
- 77% of the congregate participants indicated that they eat healthier as a result of the meal program, and
- 76% of the congregate participants indicated their health has improved as a result of eating at the lunch program.

2014 Volunteer Departmental Highlights

13,923 Routes Delivered in 2014



Over 1,300 individuals



Don & Shirley Moses were awarded the Reuter Award for their many years of dedication.

The Corporate Citizen Award was accepted by Mayor Larry Wolgast on behalf of the City of Topeka. City Staff have delivered meals since 1990.

Thank you! Thank you! Thank You!

76 Corporations, Organizations, Government, Churches, and Schools

Alliance Bank
 Angels at Home Care
 AT&T
 Atria Hearthstone
 Bank Of America
 Bartlett & West
 Blue Cross & Blue Shield Tech Team
****Blue Cross Blue Shield**
 Brewster Place
 Burlington Northern Santa Fe
 Capital City Bank
 Capitol Federal
 CBIZ Advisory Services
 Christian Family Fellowship
 City of Topeka
 CoreFirst Bank
 Courtyard by Marriott
 Davidson Funeral Home
 Department for Children & Families
 Equity Bank
 Exploring Life
 Faith Community Church
 Faith Lutheran Church
****FHLBank Topeka**
 Florence Crittenton Services
 Hill's Pet Nutrition
 HMS

Homestead of Topeka
 Judicial Center
 Kansas Children's Service League
 Kansas Department for Aging & Disability Services
 Kansas Gas Service
 Kansas Insurance Department
 Kansas Neurological Institute
 Kansas Rehabilitation Hospital
 KTWU
 Lifebridge, LLC
 Loving Hearts Training Center
 Mabee Library- Washburn University
 M-C Industries, Inc.
 Midland Care
 Murphy Tractor
 Ogden Publications
 Parrish Hotel Corporation
 Payless Shoe Source Finance #2
****Payless ShoeSource Finance #1**
 Payless ShoeSource Human Resources
 Plaza West Care
 Project Plus Alternative School
 Prudential Realtors
****Security Benefit**

Shawnee County Health Department
 Sheltered Living
 Southern Hills Mennonite Church
 Sports Car Club of America
 St. Francis Health Center
 St. Matthew Catholic School
 State Department of Revenue
 Stormont Vail HealthCare
 Sunflower Supports
 Tanglewood Nursing & Rehabilitation
 TARC Team #5
 Tecumseh Kiwanis
 Topeka Area Association of Realtors, Inc.
****Topeka Foundry and Iron Works, Co.**
 Topeka Parks & Recreation
 US Bank
 US Coast Guard
 USD 437 Auburn Washburn
 VA Health Resource Center
 Washburn Student Life
****Westar Energy**
 Xi Theta Pi

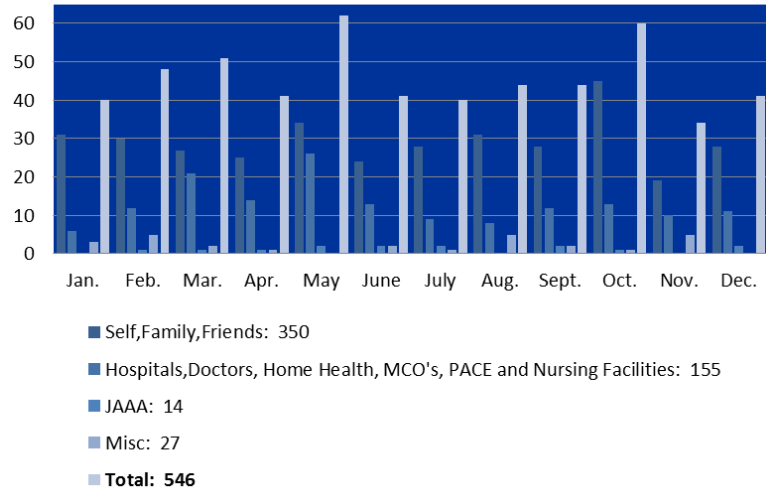
****Deliver meals 5 days/week**

2014 Social Work Departmental Highlights

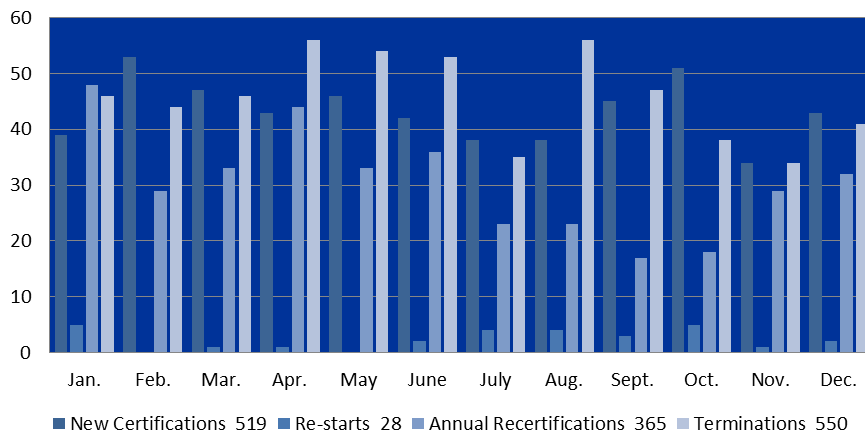


The Meals on Wheels Social Work Staff of two, made nearly 900 in-home visits in 2014

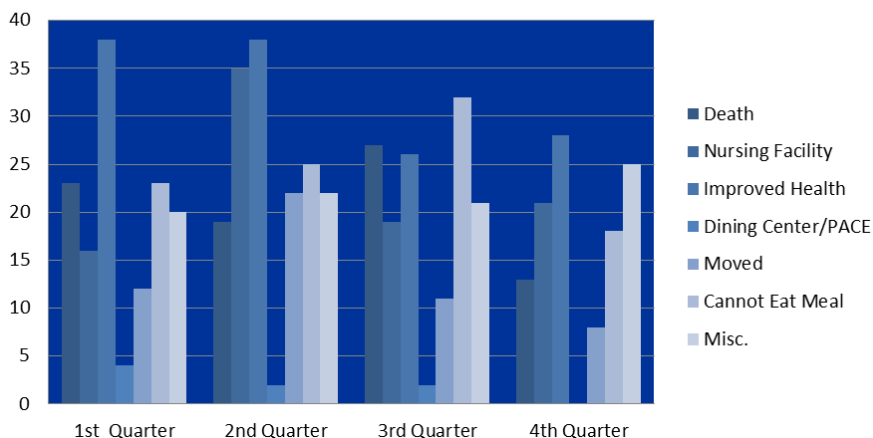
2014 Referral Sources



Client Activity



Terminations 550



*To whom this may concern,
I would like to take the time to truly thank Meals on Wheels and all the volunteers who help make it possible for myself and so many others to have a good meal that we might not otherwise have. Truly, I am thankful. God Bless this program and all who are involved.
Yours Truly,
Sue*

2014 Unaudited Financials

Statement of Financial Position December 31, 2014

Statement of Activities Year Ended December 31, 2014

Assets

Cash	\$175,231
Accounts Receivable	266,629
Investments	428,873
Other	<u>48,913</u>
Total Assets	<u>\$919,646</u>

Liabilities and Net Assets

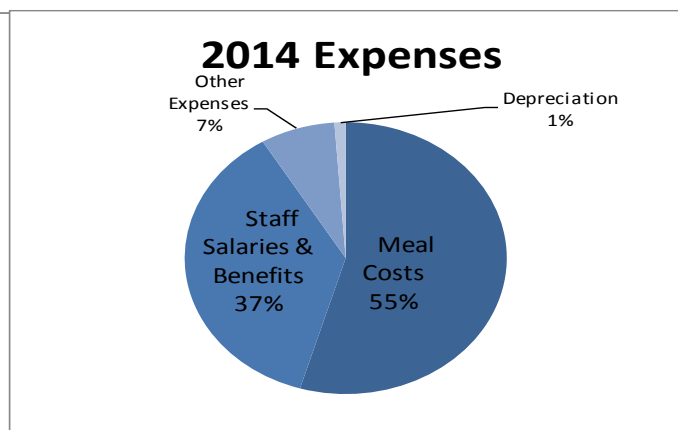
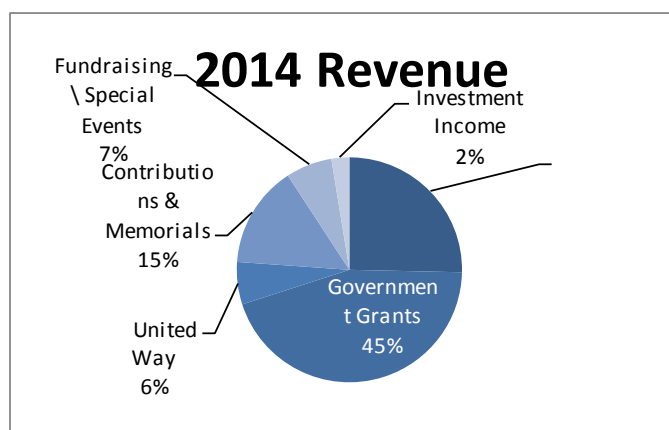
Accounts Payable	\$91,101
Accrued Vacation	<u>21,477</u>
Total Liabilities	<u>\$112,578</u>
Unrestricted	667,382
Temporarily Restricted	60,767
Permanently Restricted	<u>78,919</u>
Total Net Assets	807,068
Total Liabilities and Net Assets	<u>\$919,646</u>

Revenue

Client Donations & Payments	\$445,190
Government Grants	784,719
United Way	107,004
Contributions & Memorials	257,821
Fundraising\Special Events	116,492
Investment Income	45,139
Misc	<u>6,642</u>
Total Revenue	<u>1,763,007</u>

Expenses

Meal Costs	\$965,417
Staff Salaries & Benefits	650,902
Other Expenses	132,499
Depreciation	<u>19,918</u>
Total Expenses	<u>1,768,736</u>
Revenue Less Expense	-5,729
Unrealized Gain/(Loss) on Investments	-28,476
Increase in Net Assets	<u>-\$34,205</u>



2014 Meals on Wheels Board of Directors

David Cunningham, Chair	Stormont-Vail HealthCare
Dr. Deborah Perbeck, Immediate Past Chair.....	University of Kansas
Chris Miller, Treasurer.....	FHLBank Topeka
Paula Dell, Secretary.....	se2/Security Benefit
Jeff Sorensen, Chair-Elect.....	Cornerstone Advisors
Marcia Henderson.....	Blue Cross Blue Shield of Kansas
Tina Anderson.....	Capitol Federal
Kasey Clark.....	Westar Energy
Clarke Davis.....	Davis Publications
Cathy Gragg.....	WIBW-TV
Janet Thompson Jackson.....	Washburn University
Robbi Jenkins.....	Prairie Band Casino and Resort
Cynthia McCarvel.....	Westar Energy
Lynette Palmer.....	Community Volunteer
Keith Warta.....	Bartlett & West
Dr. Linda Wiley.....	Topeka Public Schools

Mission

*We exist to nourish the elderly and/or
homebound people in our community.*



Vision

The end of senior hunger by 2020

Meals on Wheels Leadership

Heidi Pickerell.....	President & CEO
Jeff Powell.....	CFO
Marilyn Rivera.....	Social Worker
Kim Williams.....	Resource Development Coordinator